

← North

EAST PLANT

MILL PLANT

To Hartford ↗



WEST PLANT

To New York City ↘



SCOVILL BRASS WORKS TO BRASS MILL CENTER MALL

1802 - 1997

The Scovill Brass Works was established at the East Main and Mill Streets, Waterbury, Connecticut, as Abel Porter & Company in 1802. Early production included buttons, coins, whale oil lamps and carriage trim.

In the 1840's Scovill's began producing daguerreotypes on the site, through the use of metal mats, preservers and a silver on copper method patented by the French inventor, Da Guerre, in 1839. By 1874 Scovill's photography division earned nearly as much in profits as the brass business. Multiple corporations were formed to operate different sectors of the business and consolidated into The Scovill Manufacturing Company in 1850. J.M.L. Scovill was the first President of the Company.

During WWI and WWII, Scovill produced shell casings for the war efforts and in 1945, employed more than 12,000 people on the site. Thereafter, the brass industry went on a decline.

In 1976, Scovill sold the business and site to Century Brass Products, Inc. Century operated the brass business for about a decade and filed bankruptcy in the 1980's. The 90 acre site was sold in the late 1980's to a group of California investors.

In the early 1990's, representatives of the State of Connecticut, the City of Waterbury and the City's economic development agency, The Naugatuck Valley Development Corporation (NVDC), developed a plan to demolish the factory buildings, conduct an environmental cleanup of the site and reuse the land for a regional shopping mall. Brass Center, Ltd (BCL), a non-profit corporation, was formed to oversee the work.

The wooden plaque on which this history is placed was part of a 200 year old pine tree called "the heart of pine", one of about ten 120' long wooden beams used as roof trusses of Scovill building #32. Scovill building #32 was constructed in about 1881 and noteworthy for its massive open span area made possible by the huge timbers that were roof trusses. It and others were cut from pine trees planted in southern forests in about 1665, more than 110 years before the formation of our country in 1776. BCL preserved the roof beams and donated them for later use by the Mystic Seaport for reconstruction of early 18th and 19th sailing vessels. The Mystic Seaport Corporation used one of the beams and cut this plaque from the scrap leftover and donated them back to BCL for use as souvenirs for those involved in the project. NVDC donated the restoration and re-bronzing of the stars in 1996.

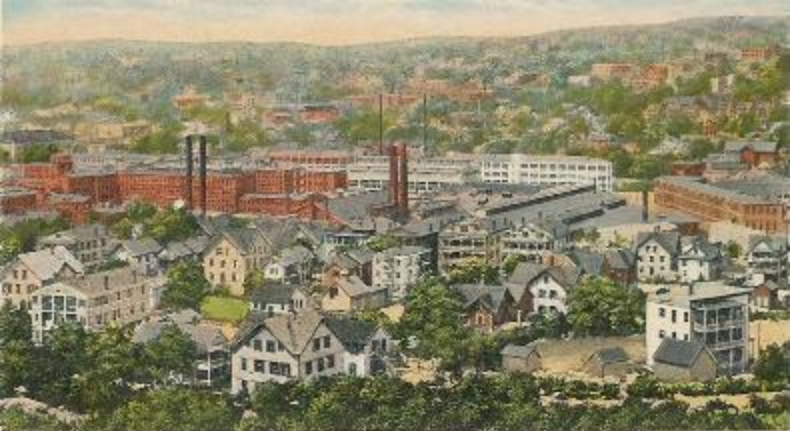
When building #32 was constructed, this was a common building practice to prevent the weight of the roof from forcing the exterior walls apart, through the use of long threaded steel rods, holding the building exterior walls from bowing out and fastened the rods outside the brick exterior walls with decorative plates. The plates on building #32 were constructed in the form of a star attached to the rods.

A total of \$36 million in State and Federal funds were secured by NVDC and the City and used for the demolition and clean up of the site and an industrial use site. The project was completed with the significant help of Governors Lowell P. Weicker and John G. Rowland, Mayor Edward D. Bergin, Jr., Senator Christopher J. Dodd, Congressmen Gary F. Franks and James H. Maloney and a team of the Waterbury Legislative delegation of State Representatives and Senators, officials from the Connecticut DEP, DED, DPW, working with the US EPA, DOD and the Army Corps of Engineers, and Waterbury's Alderman, Waterbury's Corporation Counsel Attorneys and Waterbury's regulatory agencies, all in cooperation with NVDC and BCL to redevelop the urban industrial site for re-development on time and under budget. A large number of volunteer directors of NVDC and BCL contributed to the success of this project.

Brass Center, Ltd, successfully completed demolition and cleanup, according to DEP and EPA standards, in 1996 and the 90 acre site was purchased by General Growth Properties, Inc., which built the Brass Center Mall, with private funds and opened in 1997.

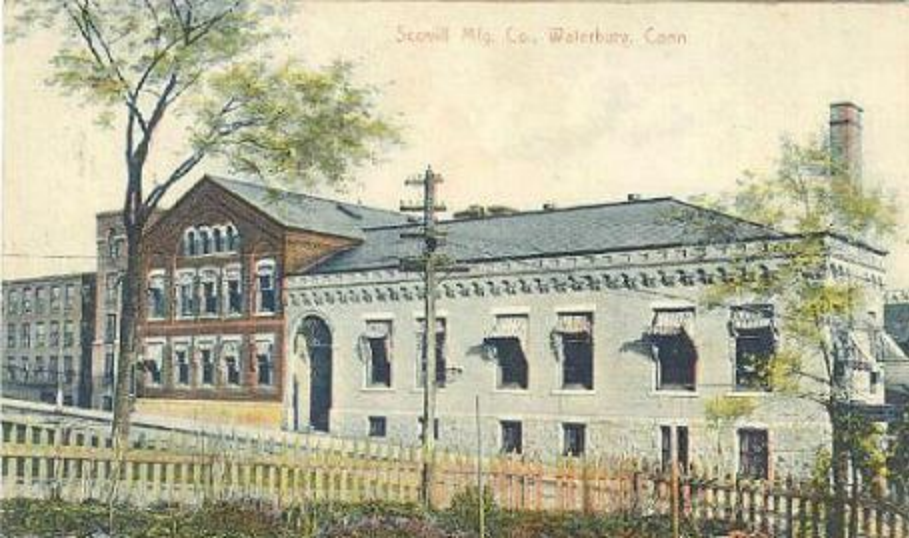
Recognition of Historic Perspectives, Inc. for this history is made.

*December, 2002
Brass Center, Ltd.
Waterbury, Connecticut*



SCOVILL MFG. CO., WATERBURY, CONN.

Scovill Mfg. Co., Waterbury, Conn.





SCOVILL
MANUFACTURING COMPANY
WATERBURY, CONN.



THE AMERICAN BRASS CO

AMERICAN BRASS CO

SCOVILL MFG CO

W 30th St

HAMILTON

MAIN PLANTS OF SCOVILL MANUFACTURING CO., WATERBURY, CONN.



**“You
can’t
buy
better
brass”**



ESTABLISHED 1887

SCOVILL MANUFACTURING COMPANY, WATERBURY CONNECTICUT



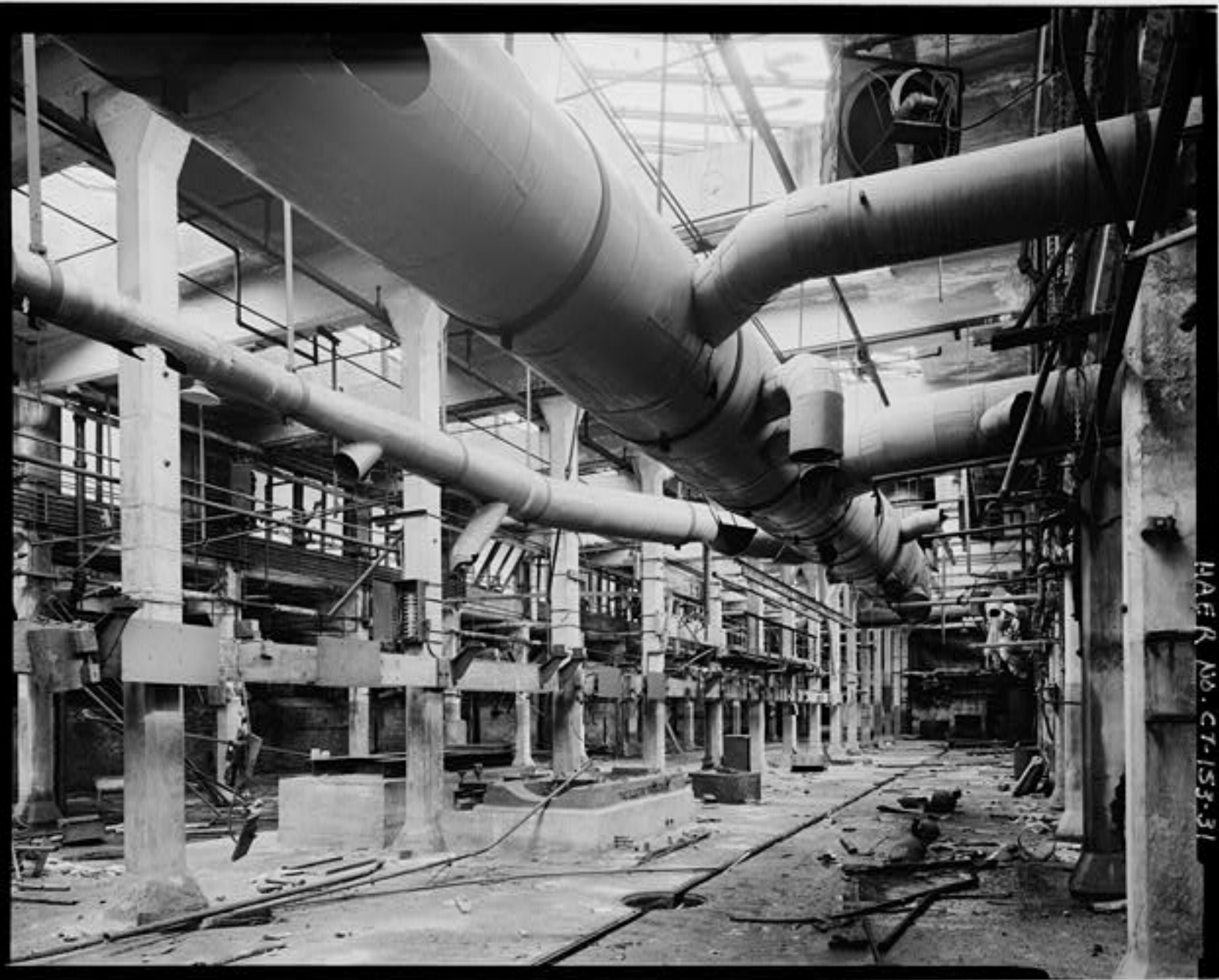
HAER NO. CT-153-84



HAER No. C7-153.4D







HAER No. C7-153-31



25

HAER No. C1-153-48



HAER NO. CT-153-91



HAER No. CF-153-44

HAER NO. C7-153-35





HAER No. CT-153-16



HAER No. CT-153-54



HAER V. CT-15337



HAER NO. CT-153-3



HAER No. C7-153-4A



HAER No. C7-153-63



HAER No. CT-1533-7

HAER No. CT-153-36





HAER No. C7-153-62



HAER NO. C7-133-50



HAER No. CT-153-8



HAER NO. CT-153-101

5



HAER NO. CT-153-93



HAER No. C7-153-79

HAER No. CT-153-9





HAER No. CT-153-94



HAER No. CT-153-17



HAER No. C7-153-56



HAER No. CT-153.99



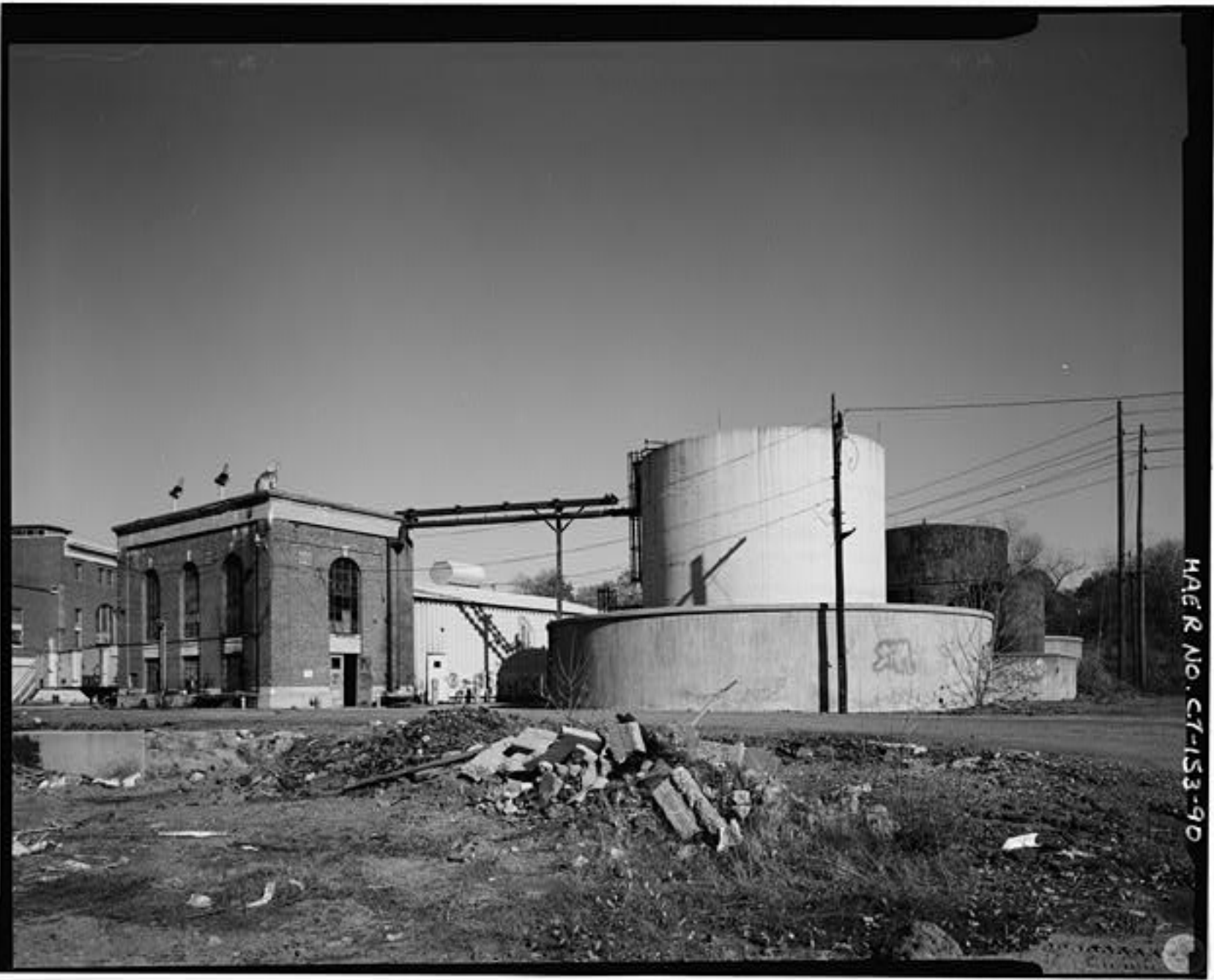
HAER NO. C7-153-13



HAER No. CT-153-110



HAER No. 9153-42



HAER No. C7-153-90

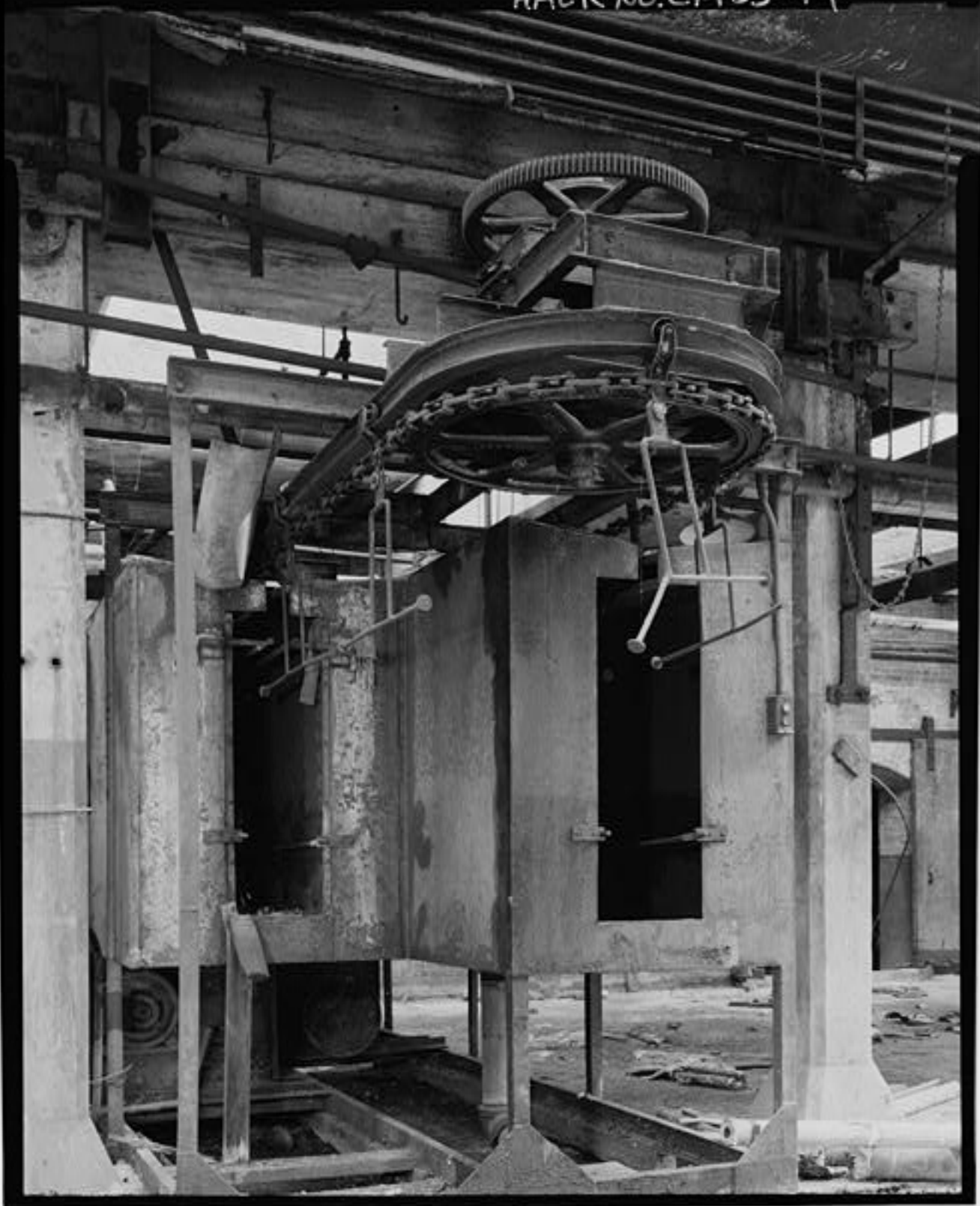


HAER DO. CT-153-104

HAER No. C7-153-85



HAER NO. CT-153-49





HAER 100 CT-15357



HAER No. CT-153-29



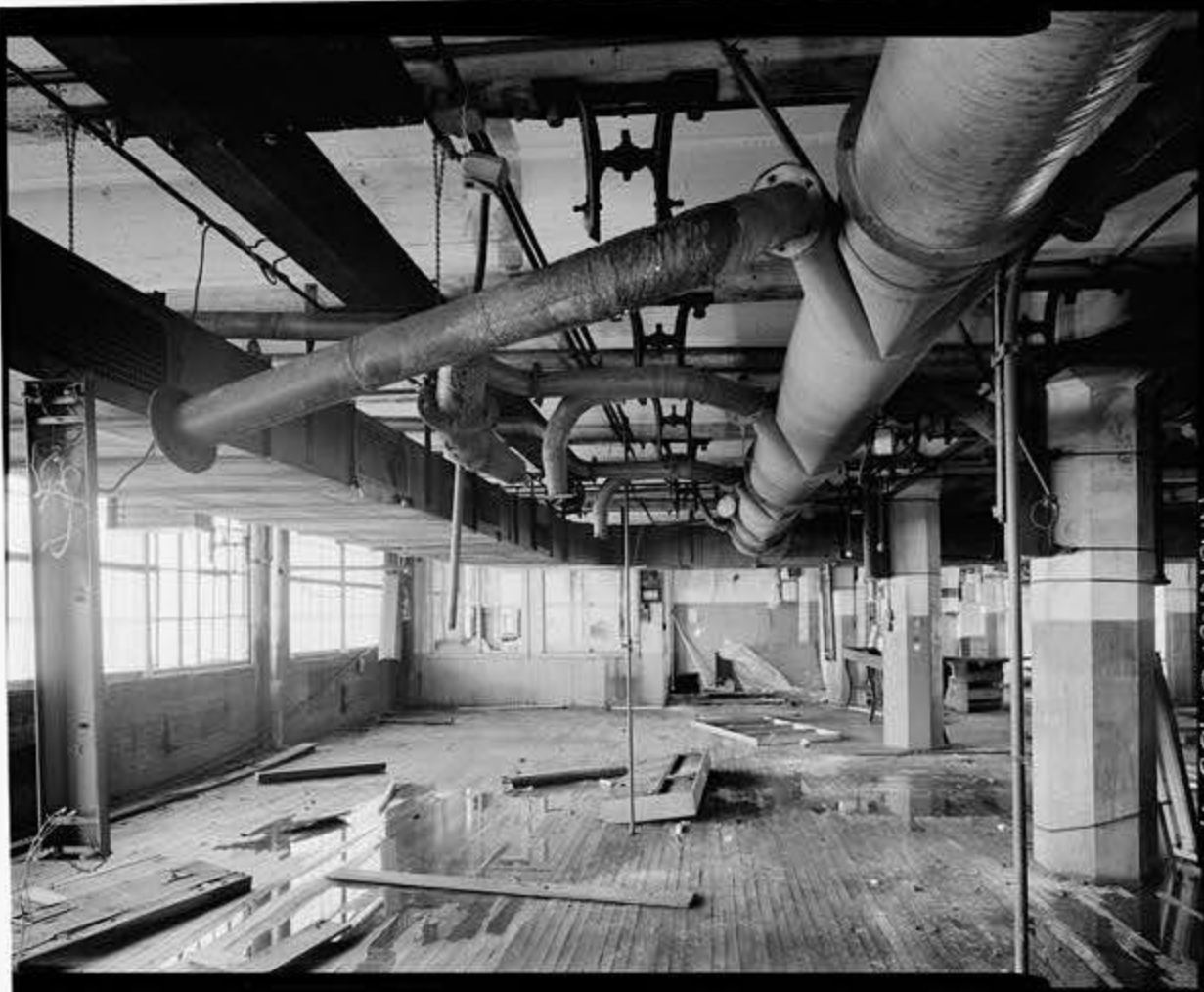
HAER No. CT-153-64



HAER No. CT-153-107



HAER No. C7-153-105



HAER No. CT-153-97



HAER No. C7-153-103



HAER No. CT-153-68



HAER No. CT-153-19



HAER No. CT-153-106



28

25 TON HILES CRANE

HAER No. C7-153-82



HAER NO. C7-153-1



HAER No. C7-153-77



HAER NO. CT-153-91



HAER No. C7-153-9a

HAER No. CT-153-43





HAER No. C7-153-53

HAER NO. CT-153-61



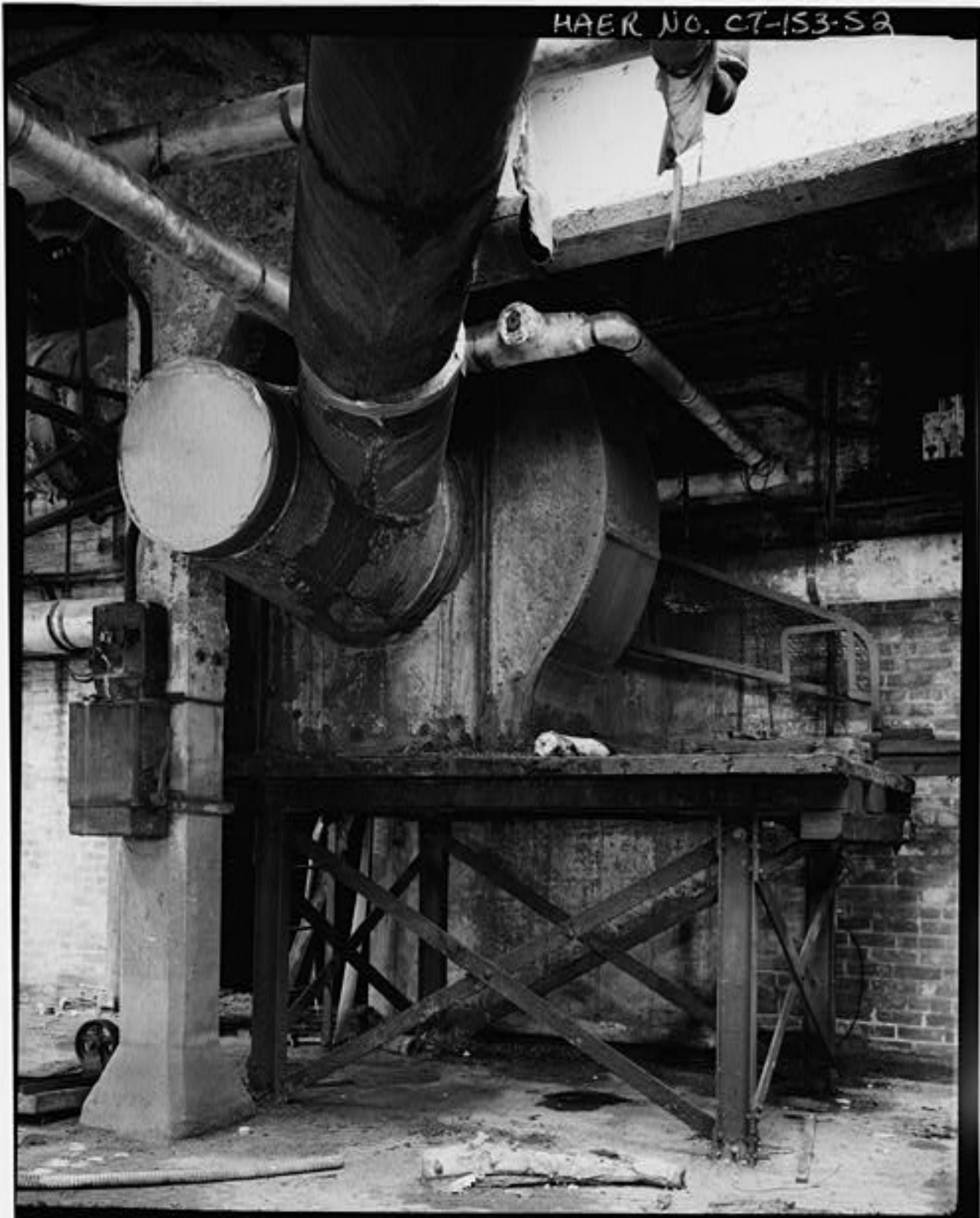
HAER NO. CT-153-60





HAER No. C7-153-12

HAER NO. CT-153-S2





HAER NOCT-153.S1



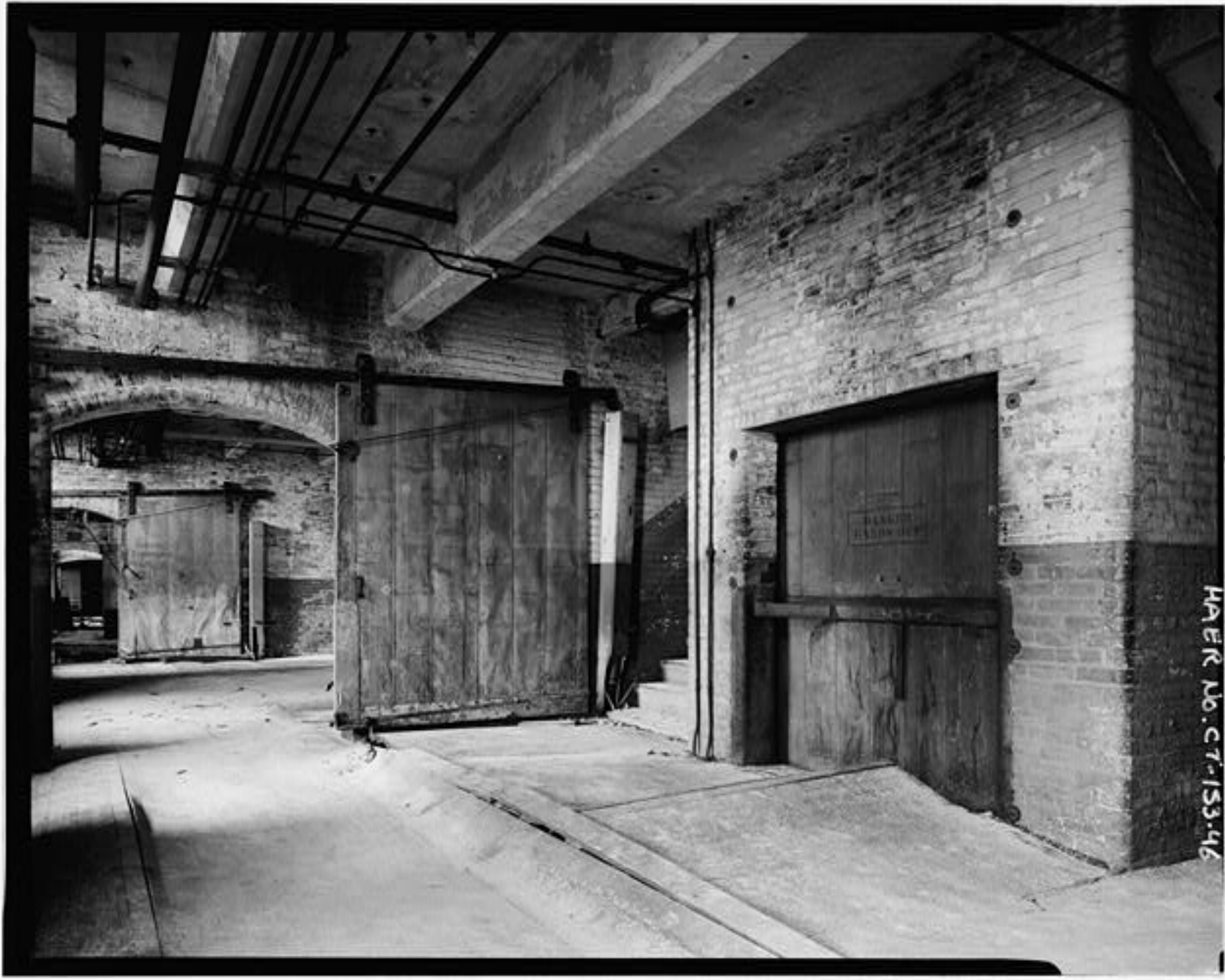
HAER No. CT-153-S



HAER No. C7-153-75



HAER No. C7-153.69



HAER No. C7-153-46

BRIDGE LOAD
STORAGE LIMITED TO
100 LBS. PER SQ. FT.
LOADED TRUCK
TOTAL OF 2600 LBS.

HAER No. C7-153-45

Centoria BRAS & PRODUCTS
INC.

HAER No. CT-153-58



HAER No. C7-153-11



HAER No. CT-153-23



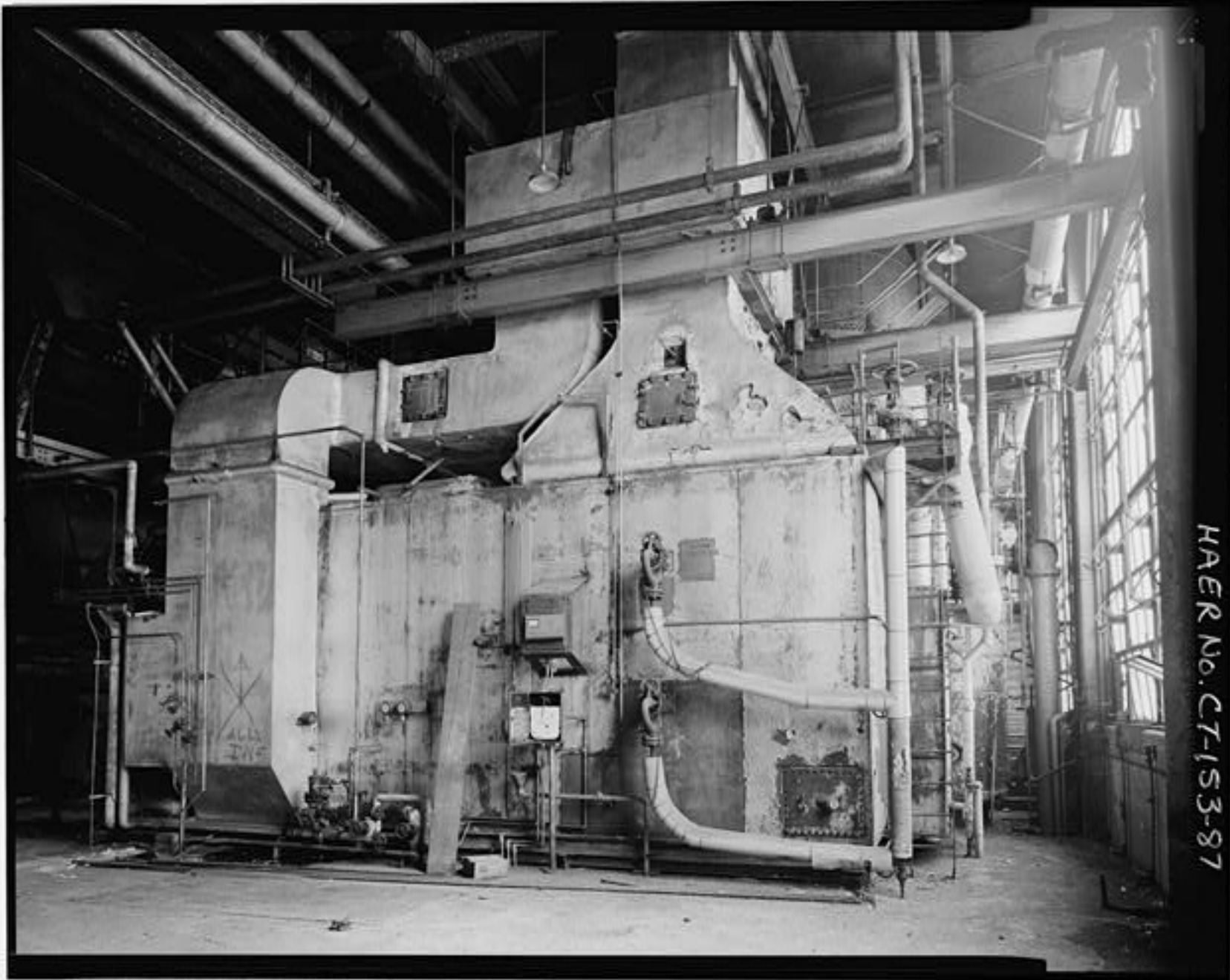
HAER No. CT-153-33



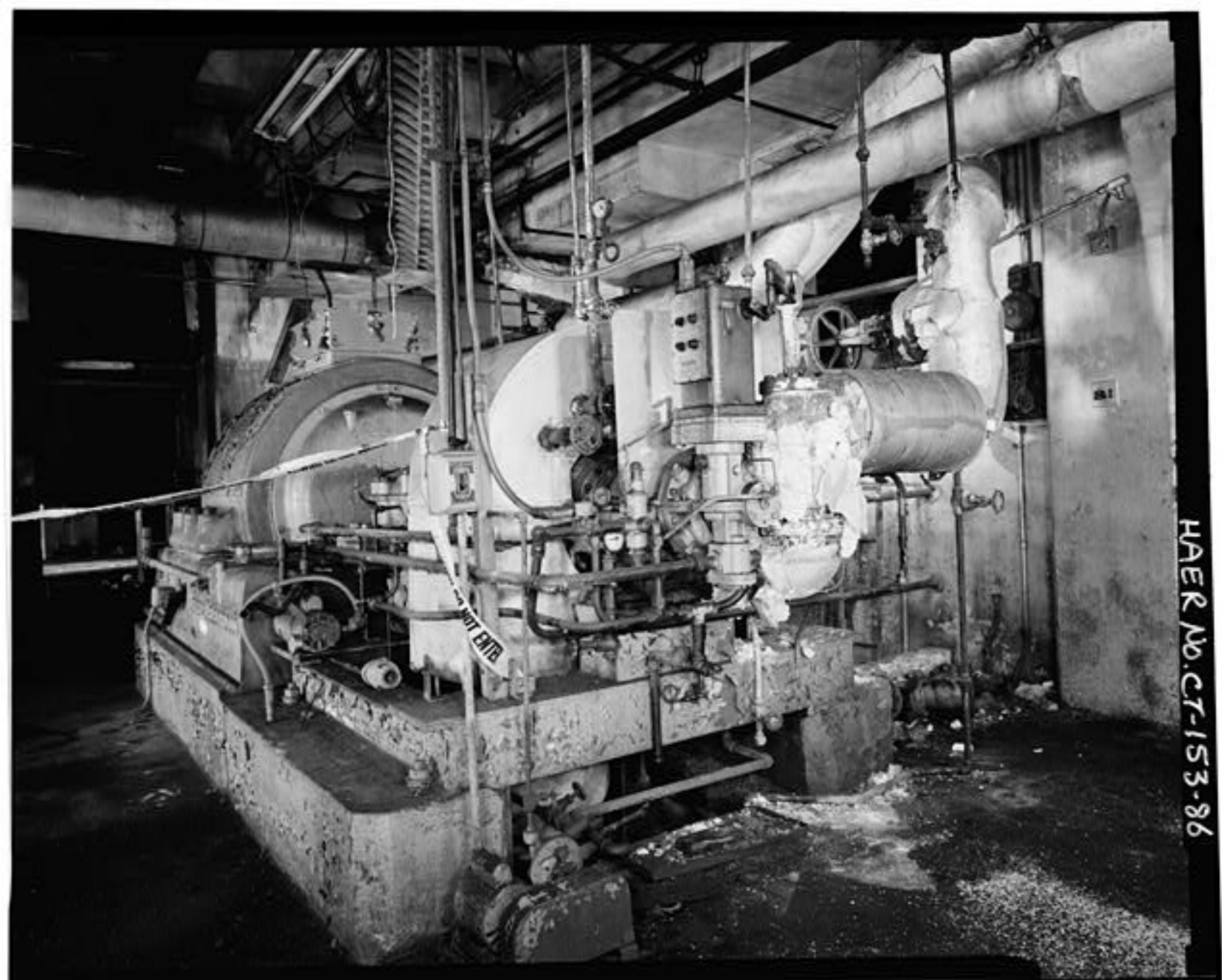
HAER NO. C7-153-4



HAER NO. C7-153-72



HAER No. CT-153-87



HAER No. CT-153-86

HAER No. CT-153-18





HAER No. CT-153-70



HAER No. C7-153-32



HAER No. CT-153-71



HAER No. CT-153-95

HAER No. C-7-153-81





HAER No. CT-153-108

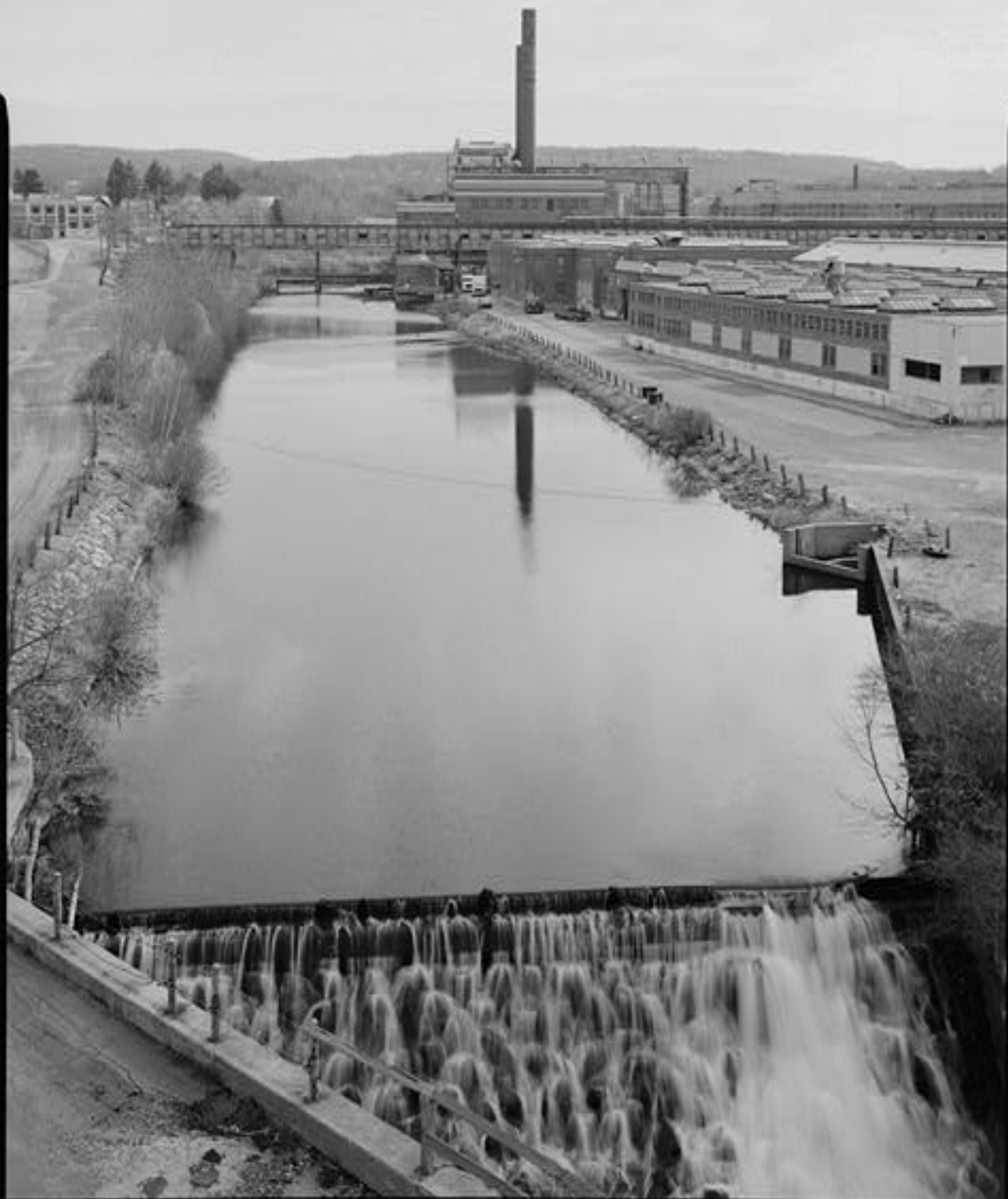


HAER NO. C7-153-65



HAER No. C7-153-100

HAER No. CT-153-66





HAER NO. C7-153-73



MAER No. CT-153-74



HAER NO. CT-153-SS



HAER No. CT-153-67

HAER No. C7-153-47





HAER No. C7-153-78



HAER No. C7-153-30



HAER No. C7-153-59

HAER No. C7-153-14





HAER No. CT-153-96



HAER No. CT-153-98



HAER No. C7-153-109



HAER NO. CT-153-2A



HAER No. CT-153-24



FAERK 00-01-103-76



HAER 00. 01. 53. 20



HAER No. C7-15339



HAER No. C7153-15



HAER No. CT-153-26



HAER No. CT-153-38



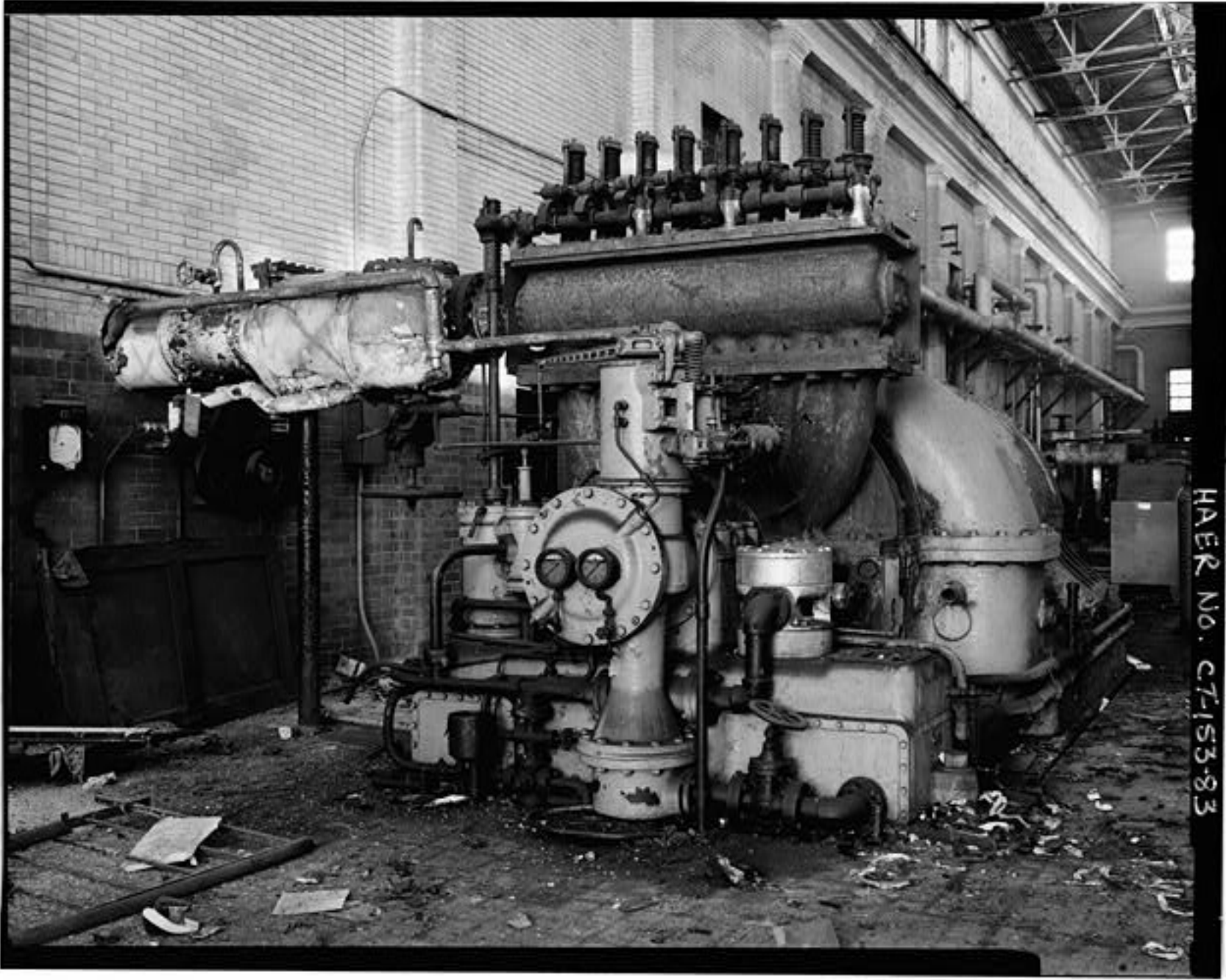
HAEKNO. CT-153-R



HAER NY. C7-153339



HAER No. CT-153-10



HAER No. CT-153-83



41

37

33

NO
SMOKING

HAER No. CT-153-28



HAER No. CT-153-80